

# Risk Management Report 2023

Board of Directors  
and Executive Board

## **Group objectives and Risk Management Report**

---

To keep our shareholders and other stakeholders informed of the group's risk and capital management policies, including risk management methodologies and practices, both short and long term.

## Contents

<b>1. Introduction</b> .....	<b>3</b>	4.7.1 Credit risk management.....	21
<b>2. Organisation</b> .....	<b>4</b>	4.8 Impairment/Losses.....	22
2.1 Introduction.....	4	4.9 The Supervisory Diamond.....	23
2.2 Risk policies and limits.....	5	<b>5. Market Risk</b> .....	<b>24</b>
2.3 Risk organization.....	5	5.1 Organisation.....	24
2.3.1 Board of Directors.....	7	5.2 Definition.....	24
2.3.2 Executive Board.....	7	5.3 Policy and responsibility.....	24
2.3.3 Credit Committee.....	7	5.4 Control and management.....	25
2.3.4 Staff departments.....	7	5.5 Market risk.....	25
2.3.5 Business units.....	8	5.6 Interest rate risk.....	25
2.4 Reporting.....	8	5.7 Exchange rate risk.....	26
<b>3. Capital Management</b> .....	<b>10</b>	5.8 Equity market risk.....	26
3.1 Framework of the Group's capital management.....	10	<b>6. Liquidity Risk</b> .....	<b>27</b>
3.2 Pillar I.....	10	6.1 Definition.....	27
3.3 Pillar II.....	10	6.2 Control and management.....	27
3.3.1 Solvency requirement.....	12	6.2.1 Operational liquidity risk.....	27
3.3.2 The methodology.....	12	6.2.2 Liquidity stress testing.....	27
3.3.3 Group solvency requirement.....	13	6.2.3 Twelve-month liquidity.....	27
3.4 Combined buffer requirement.....	13	6.2.4 Structural liquidity risk.....	27
3.5 Excess capital.....	14	6.2.5 Funding sources.....	28
3.6 Leverage ratio.....	15	6.3 Collateral provided by the Group.....	29
<b>4. Credit Risk</b> .....	<b>16</b>	<b>7. Operational Risk</b> .....	<b>30</b>
4.1 Definition.....	16	7.1 Definition.....	30
4.2 Policy.....	16	7.2 Policy.....	30
4.3 Credit process.....	16	7.3 Measurement and control.....	30
4.4 Credit risk classification.....	17	7.4 Long-term goals in operational risk management.....	30
4.5 Credit exposure.....	17	<b>8. Insurance Risk</b> .....	<b>31</b>
4.5.1 Credit exposure, quality, and concentration.....	18	8.1 Capital requirements.....	31
4.6 Risk mitigation.....	20	8.2 Trygd non-life insurance.....	31
4.7 Monitoring and portfolio management.....	21	8.3 NordikLiv-Life insurance.....	34

## 1. Introduction

The purpose of BankNordik's Risk Management Report is to ensure transparency in the BankNordik Group and to make available information on how the Group manages the risks it encounters.

BankNordik's Risk Management Report is published annually on the Group's website: [www.banknordik.com/rmr](http://www.banknordik.com/rmr), simultaneously with the release of the Group's Annual Report 2023. The Risk Management Report is a separate unaudited document. There are no audit requirements for the Risk Management Report, but much of the information in the Risk Management Report will also be provided in the audited Annual Report 2023.

## 2. Organisation

### 2.1 Introduction

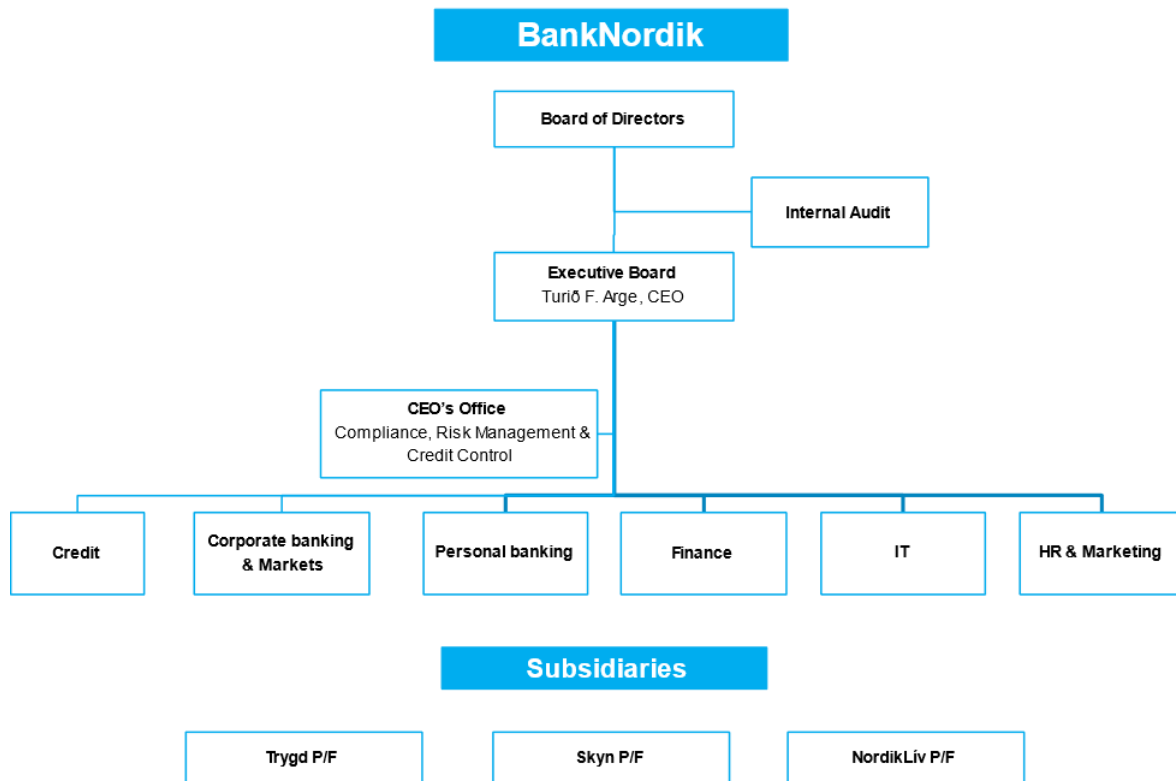
Understanding and ensuring transparency in risk taking are key elements of the BankNordik Group's business strategy. The Group's ambition is to set high standards for risk management. Our risk organization supports this ambition, and it has developed in-depth risk management expertise.

The Board of Directors sets out the overall risk policies for all types of material risk while the Chief Executive Officer (CEO) is responsible for the day-to-day management of the Group, including implementation of the risk policies and risk management.

The Executive Board consists of Group CEO, Turið F. Arge. At the chief operational level, the Group is divided into two main business units:

- Corporate Banking operations in the Faroe Islands and Greenland, headed by Brian Smedemark
- Personal Banking operations in the Faroe Islands and Greenland, headed by Silja á Borg Færø

Figure 1



The business units are supported by the following units:

- Credit Services, Finance, Accounting, Treasury, IT, Marketing and Markets

The Group's risk officer and compliance officer are members of CEO's office.

The Board of Directors and the Group Executive Management Team have established various sub-committees, including an Audit Committee, a Risk Committee, a Remuneration Committee, and a Nomination Committee.

The Group allocates resources to manage and monitor risk and to ensure on-going compliance with approved risk limits. The Group has a reporting cycle to ensure that the relevant management bodies, including the Board of Directors, the Chief Executive Officer, and the Group Executive Management Team, are kept informed of relevant developments in risk measures.

The Group's risk policies as well as its limits and organizational framework for risk management are described in greater detail in the following sections.

## 2.2 Risk policies and limits

The Board of Directors sets out the overall risk policies and limits for all material risk types. The Board also determines the general principles for managing and monitoring risk, and it reviews the risk policies and limits annually. The Group uses risk appetite as a strategic concept to determine its risk-based limits. Risk appetite represents the maximum risk the Group is willing to assume in pursuit of its business targets. The risk appetite framework offers an overview of various risk dimensions and enables the Group to manage risk measurement across these dimensions in accordance with its overall risk policies.

The framework is based on an analysis of the current risk profiles of the Group and its major business units. It includes setting explicit targets, limits, and contingency plans in accordance with the risk policies. It also includes monitoring of risk levels.

Key risk elements are identified on an on-going basis in a dynamic process driven by new products, procedures, risk measurement applications as well as economic developments. The Group conducts risk management at the customer and industry levels as well as on the basis of geographical location and collateral type. It takes a comprehensive approach to the core risk dimensions:

- Credit risk
- Market risk
- Liquidity risk
- Operational risk

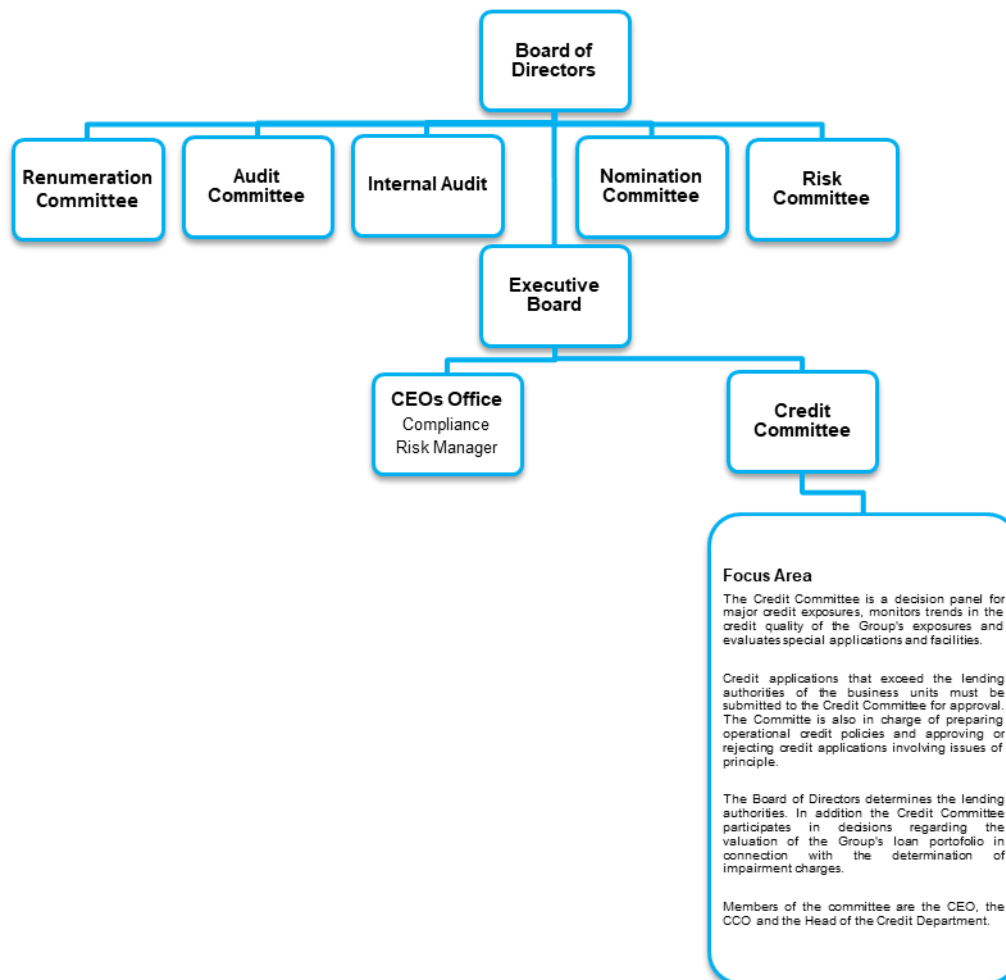
Other risk dimensions are incorporated at the Group and business unit levels where appropriate. They include insurance and concentration risk, financial strength, and earnings robustness. Specific risk instructions for the main business units are prepared on the basis of the overall risk policies and limits. These instructions are used to prepare business procedures and reconciliation and control procedures for the relevant units and for system development purposes.

## 2.3 Risk organization

BankNordik's "Rules of procedure" for the Board of Directors and the "Board of Directors' Instructions to the Executive Board" specifies the responsibilities of the Board of Directors and the Executive Board and the division of responsibilities between them. This two-tier management structure has been developed in accordance with Faroese and Danish legislation, and the "Rules of procedure" and "Board of Directors' Instructions to the Executive Board" are key documents in the Group's management structure, including the organization of risk management and authorizations.

The Board of Directors lays down overall policies, while the Executive Board oversees the Group's day-to-day management and reports to the Board of Directors. None of the Group's executive managers serve on the Board of Directors of the parent company. The risk and capital management functions are separate from the credit assessment and credit-granting functions, as shown in figure 2.

Figure 2



The Group's management structure also reflects the statutory requirements governing listed Faroese companies in general and financial services institutions in particular. The BankNordik Group applies to comply or explain principle set out in the recommendations issued by the Committee of Corporate Governance. These recommendations apply to companies listed on NASDAQ Copenhagen.

The Audit Committee examines accounting, auditing, and security issues that the Board of Directors, the Audit Committee, the internal auditor, or the external auditors believe deserve attention. The Risk Committee reviews the internal control and risk management system.

The Audit Committee consists of Rúni Vang Poulsen, Chairman of the Committee, Kristian Reinert Davidsen, member of the board and Birgir Durhuus, member of the board.

The Risk Committee consists of Birgir Durhuus, Chairman of the Committee, Birita Sandberg Samuelsen, Chairman of the board, Tom Ahrenst, member of the board.

The Executive Board has assembled the Group Executive Management Team and established a Credit Committee i.e. a risk-orientated sub-committee.

### 2.3.1 Board of Directors

The Board of Directors must ensure that the Group is appropriately organized. As part of this duty, it appoints the members of the Executive Board and the Group's Chief Internal Auditor.

The largest credit facilities are submitted to the Board of Directors for approval, and the Board defines overall limits for market risk and liquidity risk. Regular reporting enables the Board of Directors to monitor whether the overall risk policies and systems are being complied with and whether they meet the Group's needs. In addition, the Board of Directors reviews reports analysing the Group's portfolio, particularly information about industry concentrations, large exposures, and impaired exposures.

Internal Audit examines accounting, auditing, and security issues. These are issues that the Board of Directors or the external auditors believe deserve day-to-day attention. Internal Audit also reviews the internal control and risk management systems.

### 2.3.2 Executive Board

The Executive Board is responsible for the day-to-day management of the Group as stated in the "Rules of procedure" for the Board of Directors and the "Board of Directors' Instructions to the Executive Board".

The Executive Board sets forth specific risk instructions and supervises the Group's risk management practices. It reports to the Board of Directors on the Group's risk exposures and approves material business transactions, including credit applications up to a defined limit.

The Group has also organized various sub-committees/functions for specific risk management areas such as asset and liability management and the management of risk parameters and models affecting the Group's capital and risk-weighted assets. The sub-committees consist mostly of members of the management team.

### 2.3.3 Credit Committee

The Credit Committee consists of the CEO, the head of Corporate Banking operations, the head of the Credit department and the vice head of the Credit department.

Credit applications that exceed the lending authorities of the Credit Department (personal and corporate customers) must be submitted to the Credit Committee for approval along with a credit recommendation.

The Committee is in charge of preparing operational credit policies and approving or rejecting credit applications involving issues of principle.

The Board of Directors determines the lending authorities. In addition, the Credit Committee participates in decisions regarding the valuation of the Group's loan portfolio in connection with the determination of impairment charges.

### 2.3.4 Staff departments

The Group's overall risk issues including credit, market, liquidity, and operational risks are monitored by the Group's Risk Officer, in co-operation with managers of business units and subsidiaries, reporting directly to the Executive Board.

The Finance department oversees the Group's financial reporting, budgeting, liquidity, and capital structure. It also has overall responsibility for the Group's compliance with the Capital Requirements Directive and related legislation and for the internal capital adequacy assessment process.

The Group has established a functional separation between units that enter into business transactions with customers or otherwise expose the Group to risk on the one hand and units in charge of overall risk management on the other.

The Group's Risk Management is carried out by the Group's Risk Officer which is a part of the Executive Board Secretariat with reporting rights and obligations to the Executive Board and reporting rights to the Board of Directors in risk-related matters. Risk Management has overall responsibility for monitoring the Group's risk portfolio and

reporting on overall risk measures. In addition, Risk Management is responsible for the implementation of risk models and risk analysis and for providing support to the Risk Committee.

The Credit Department has the overall responsibility for the credit process in all of the Group's business units. This includes responsibility for developing credit classification and valuation models and for seeing that they are used by the local units in their day-to-day credit processing. The Credit Department is in charge of determining the utilization of portfolio limits for industries and countries and of the quarterly process of calculating the impairment of exposures. It also keeps track of the credit quality of the Group's loan portfolio by monitoring trends in unauthorized overdrafts and overdue payments, new approvals to weak customers and other factors. In addition, the Credit Department reports to the Group management and to business units on developments in the Group's credit risk. Finally, the department is in charge of providing management information about credits, of monitoring credit approvals in the business units, and of determining the Group's requirements relating to its credit systems and processes.

The CEO's office is in charge of analysing and monitoring strategic business risk and corporate governance.

### **2.3.5 Business units**

Core risk dimensions such as market risk and liquidity risk are managed centrally. For credit risk, however, lending authority for specific customer segments and products has been delegated to the individual business units. The business units carry out the fundamental tasks required for optimal risk management. This includes updating the necessary registrations about customers that are used in risk management tools and models, as well as maintaining and following up on customer relationships.

Each business unit is responsible for preparing carefully drafted documentation before business transactions are undertaken and for properly recording the transactions. Each business unit is also required to update information on customer relations and other issues as may be necessary.

The business units must ensure that all risk exposures comply with specific risk instructions as well as the Group's other guidelines. Loan and credit approvals to retail customers and small business customers are given according to the lending authorities delegated to the individual branches.

Customer advisers are responsible for the basic credit assessment of customers. Their lending authority depends on customer classification, and they can approve credits up to certain amounts. Advisers must forward applications for credit facilities beyond their lending authority to the branch management, which may decide to submit applications to the Credit Department.

### **2.4 Reporting**

The Group has a reporting cycle to ensure that the relevant management bodies, including the Board of Directors, the Executive Board, and the Group Executive Management Team, are kept informed of, among other things, developments in risk measures, the credit portfolio, non-performing loans, market risk, strategic and operational risk.

The Board of Directors receives the principal risk reports (see Table 1) and the principal solvency requirement in the form of the Group's annual solvency handbook. As part of the quarterly evaluation of the Group's solvency requirement, the Board of Directors receives up-to-date information on any material changes in the Group's risk profile. On a monthly basis the Board of Directors receives a report on the Group's market and liquidity risk.



Table 1-3 Preferred risks: Monitoring, analysing, and reporting

		Table 1
Risk appetite	Strategic determination of risk-based limits, representing the maximum risk that the Group is willing to assume in pursuit of business targets and in accordance with its overall risk policies.	
Risk policy	Review of the Group's overall risk policy to determine whether revisions are required.	
Models and parameters	Update on the use of risk models and risk parameters.	
Quality of credit portfolio	Analysis of impairment charges and losses by business unit and portfolio break-downs by category, size, business unit, etc.	

		Table 2
BankNordik Group Methodology	Evaluation of the preferred risk and the level of capital according to the FSA's 8+ approach.	
Key figures for the credit portfolio	An overview of credit-quality indicators, classifications and trends in lending volumes.	
Market risk	Analysis of the Group's current equity, fixed income and currency positions and report on the utilisation of Board approved limits since the preceding report.	
Large exposures	An overview of exposures equal to or exceeding 10% of the Group total capital and the sum of these exposures, including the percentage of the Group's total capital it represents.	

		Table 3
Liquidity risk	Analysing and stress tests of the Group's current liquidity	
Market risk	Analysis of the Group's current equity, fixed income and currency positions and report on the utilisation of Board approved limits since the preceding report.	

### 3. Capital Management

BankNordik is well capitalized with a high solvency ratio and excess cover relative to the statutory requirements. The Board of Directors is focused on maintaining the capital base necessary to fulfil its strategic goals and sustain the Bank's continued business development. Constant monitoring and valuation of the Group solvency ratio forms an integral part of the Group's capital management.

#### 3.1 Framework of the Group's capital management

The basis of the BankNordik Group's capital management is the CRD IV requirements and the Internal Capital Adequacy Assessment Process (ICAAP), which consists of three pillars.

- Pillar I contains a set of rules for a mathematical calculation of the Total capital and the risk weighted assets (RWA).
- Pillar II describes the supervisory review and evaluation process and contains the framework for the internal capital adequacy assessment process.
- Pillar III deals with market discipline and sets forth disclosure requirements for risk and capital management.

#### 3.2 Pillar I

In accordance with the CRD IV requirements stipulated in the regulation (EU) No 575/2013 of the European parliament and of the Council of 26 June 2013, total RWA is calculated as the sum of RWA for credit, market, and operational risk. Total capital is calculated as the sum of common equity tier 1 (CET1) and additional tier 1 and tier 2 instruments.

Table 4 sets out the Bank's Solvency statement as of 31 December 2023, including the basis for calculating risk-weighted items, CET 1 capital, Core capital and Total capital.

#### 3.3 Pillar II

While Pillar I contains uniform rules for capturing a financial institution's risk and calculating the capital requirements in accordance with the CRD IV requirements, it does not necessarily capture all risk affecting individual institutions. Pillar II contains a framework for an Own Risk Solvency Assessment process based on the situation and characteristics of the individual institution. The underlying aim of the Pillar II process is to enhance the link between an institution's risk profile, its risk management systems and its capital. Institutions are expected to develop sound risk management processes that properly identify, measure, aggregate and monitor their risk.

Pillar II is underpinned by four principles:

- Assessment of capital adequacy in relation to the institution's risk profile and capital strategy
- Review and evaluation of the assessment and its ability to monitor and ensure compliance with its own requirement.
- The expectation that the institution will operate above the Minimum Capital Requirement (MCR) and the ability of the Danish FSA to require a financial institution to maintain a capital buffer relative to the MCR.
- FSA intervention at an early stage to prevent capital from falling below the minimum level required to support the risk profile or to require rapid remedial action if capital is not maintained or restored.

Table 4 – Capital and Solvency

**Capital and Solvency - BankNordik**

Solvency	Dec. 31	Dec. 31
DKK 1,000	2023	2022
Core capital	1,907,887	1,687,620
Total capital	2,007,537	1,787,130
Risk-weighted items not included in the trading portfolio	5,808,267	6,044,057
Risk-weighted items with market risk etc.	347,722	506,894
Risk-weighted items with operational risk	662,873	644,527
<b>Total risk-weighted items</b>	<b>6,818,861</b>	<b>7,195,479</b>
<b>CET 1 capital ratio</b>	<b>25.8%</b>	<b>21.4%</b>
<b>Core capital ratio</b>	<b>28.0%</b>	<b>23.5%</b>
<b>Total capital ratio</b>	<b>29.4%</b>	<b>24.8%</b>
<b>MREL capital ratio</b>	<b>41.1%</b>	<b>29.7%</b>
<b>Core Capital and Shareholders' equity</b>		
Share capital	192,000	192,000
Reserves	7,948	14,392
Net profit	307,533	164,407
Retained earnings, previous years	1,347,453	1,431,815
<b>Shareholders' equity, before deduction of holdings of own shares</b>	<b>1,854,934</b>	<b>1,802,614</b>
Deduction of ordinary dividend	80,000	115,000
Deduction of extraordinary dividend	0	135,000
Deduction of holdings of own shares	4,325	3,757
Deduction of intangible assets	1,702	2,402
Deduction of deferred tax assets	9,362	6,666
Deduction regarding prudent valuation of financial instruments	1,503	1,806
<b>CET 1 capital</b>	<b>1,758,043</b>	<b>1,537,983</b>
Hybrid core capital	149,844	149,637
<b>Core capital</b>	<b>1,907,887</b>	<b>1,687,620</b>
<b>Total capital</b>		
Core capital	1,907,887	1,687,620
Subordinated loan capital	99,650	99,510
<b>Total capital</b>	<b>2,007,537</b>	<b>1,787,130</b>
MREL capital	798,224	349,954
<b>Total capital incl. MREL capital</b>	<b>2,805,762</b>	<b>2,137,083</b>

The BankNordik Group holds a license to operate as a bank and is therefore subject to a capital requirement under the Faroese Financial Business Act and to CRR. The Faroese provisions on capital requirements apply to both the Parent Company and the Group. The capital requirement provisions stipulate a minimum capital of 8% of the identified risks. A detailed body of rules determines the calculation of capital as well as risks (risk-weighted items). The capital comprises CET 1 capital, hybrid core capital and subordinated loan capital. The CET 1 capital corresponds to the carrying amount of equity, after deductions of holdings of own shares, tax assets and other minor deductions.

In order to measure and identify all risk exposure to the Group, the Group applies a Danish FSA approved capital adequacy assessment process.

The method is based on an 8+ approach. An 8+ approach means that a review takes, as its baseline, the minimum requirement of 8 per cent of the risk-weighted items (pillar 1) plus a margin for risks and matters that are not fully

reflected in the statement of risk-weighted items. In other words, ordinary risks are assumed to be covered by the 8 per cent requirement, and the question to consider is whether a bank is exposed to other risks that necessitate an increase in the solvency requirement (pillar II).

### 3.3.1 Solvency requirement

The Group's Executive Board and Board of Directors are responsible for maintaining a sufficient capital base and lay down requirements for individual solvency. The Group's Risk Committee is responsible for monitoring and making sure on an ongoing basis that the solvency requirements (methodological) determined by the Executive Board and the Board of Directors are complied with at all times. The overall responsibility for reporting to the Executive Board and the Board of Directors regarding solvency requirements lies with the Finance Department.

### 3.3.2 The methodology

The Group has implemented a methodology approved by the Danish FSA to ensure that BankNordik can expose/identify any potential risk and meet the requirements set by the Executive Board and the Board of Directors. The methodology forms an integral part of the Group's organization, and the Finance Department prepares a quarterly report. The report is then submitted to the Executive Board. The Board of Directors receives a condensed quarterly report and a full annual solvency requirement report that is submitted to the Board for approval.

The method can be split into two main parts. The first part involves the calculation of the minimal capital requirement (please refer to the 8+ approach). The second part consists of eight underlying risk factors:

- Earnings
- Growth in lending
- Credit risk
- Market risk
- Liquidity risk
- Operational risk
- Leverage risk
- Statutory requirements

In addition to these eight risk factors, the Bank calculates potential premiums for special risks believed not to be covered by the calculation of minimal risk. See the calculation of the 8+ capital requirement below in table 5.

Table 5

Capital and solvency adequacy assessment (DKK 1,000)	31.12.2023		31.12.2022	
	Capital requirement, 1,000 DKK	RWA Capital requirement, per cent	Capital requirement, 1,000 DKK	RWA Capital requirement, per cent
1) Basic Capital requirement, 8 % of RWA	545,324	8.0%	575,638	8.0%
+ 2) Earnings (capital for risk coverage due to weak earnings)	-	0.0%	-	0.0%
+ 3) Growth in lending (capital to cover organic growth in business)	-	0.0%	-	0.0%
+ 4) <i>Credit risk, of which:</i>	67,156	1.0%	69,337	1.0%
4a) Credit risk on major customers in financial distress	19,900	0.3%	16,879	0.2%
4b) Other credit risk	4,153	0.1%	6,321	0.1%
4c) Concentration risk on individual exposures	22,395	0.3%	28,491	0.4%
4d) Concentration risk on industries	20,709	0.3%	17,645	0.2%
+ 5) <i>Market risk, of which:</i>	45,687	0.7%	52,581	0.7%
5a) Interest risk	25,687	0.4%	32,581	0.5%
5b) Credit spread risk	20,000	0.3%	20,000	0.3%
5c) Equity risk	-	0.0%	-	0.0%
5d) Foreign exchange risk	-	0.0%	-	0.0%
+ 6) Liquidity risk (capital to cover more expensive liquidity)	-	0.0%	-	0.0%
+ 7) Operational risk (capital to cover operational risk in excess of )	40,899	0.6%	57,564	0.8%
+ 8) Gearing (capital to cover risk due to gearing)	-	0.0%	-	0.0%
+ 9) Margins due to statutory requirements	-	0.0%	-	0.0%
<b>Capital requirement and solvency requirement ratio</b>	<b>699,067</b>	<b>10.3%</b>	<b>755,121</b>	<b>10.5%</b>

If any other areas of special risk are identified that are not listed in the model set out above, the Bank calculates an extra capital requirement for such risk. In addition to stress testing different risk parameters, the second part of the

model involves additional capital requirements for specific additional individual risk exposures, where every potential material risk specific to BankNordik is taken into account and any potential risk is included in order to determine a possible additional capital requirement. The summary of the minimal 8+ capital requirement and any possible individual additional capital requirement constitute BankNordik's total individual capital requirement.

### 3.3.3 Group solvency requirement

The Group's solvency requirement has been calculated using the method illustrated above. At the end of December 2023, the solvency requirement was 10.3%, the risk-weighted items were DKK 6.8bn and the capital requirement was DKK 699m.

Excess capital according to adequacy requirements			Table 6
DKK 1,000	31.12.2023	31.12.2022	Change
Total risk-weighted items	6,818,861	7,195,479	-376,617
Total capital incl. MREL capital	2,805,762	2,137,083	668,678
Total capital	2,007,537	1,787,130	220,408
Core capital	1,907,887	1,687,620	220,268
CET 1 capital	1,758,043	1,537,983	220,060
MREL capital ratio	41.1%	29.7%	11.4%
Total capital ratio	29.4%	24.8%	4.6%
Core capital ratio	28.0%	23.5%	4.5%
CET 1 capital ratio	25.8%	21.4%	4.4%
Capital requirement	699,275	755,121	-55,846
Solvency requirement	10.3%	10.5%	-0.2%
Excess Subordinated and Hybrid loan capital (> 2% / > 1,5% of RWA), DKK	-10,915	2,695	-13,610
Excess Subordinated and Hybrid loan capital (> 2% / > 1,5% of RWA), %	-0.2%	0.0%	-0.2%
<b>Excess capital, DKK 1,000</b>	<b>1,297,347</b>	<b>1,034,704</b>	<b>262,643</b>
<b>Excess capital ratio</b>	<b>19.0%</b>	<b>14.3%</b>	<b>4.7%</b>

### 3.4 Combined buffer requirement

Danish and Faroese financial institutions are obligated to comply with several capital buffer requirements in addition to their individual solvency needs.

Common to all capital buffer requirements is that only the CET 1 capital can be used to meet the requirements. In cases where a financial institution does not meet the capital requirement for the buffers, it will result in limitations on the institution's ability to make dividend payments and other distributions.

The capital buffer requirement consists of the following elements, determined based on the total risk exposure. The sum of these is referred to as the combined capital buffer requirement:

- Capital conservation buffer
- Countercyclical buffer
- SIFI buffer
- Systemic risk buffer

The purpose of the capital conservation buffer is to ensure a financially robust sector by strengthening the CET 1 capital. This buffer requirement is set at 2.5% of the total risk exposure.

The countercyclical buffer aims to build capital during periods of economic upturn. Its purpose is to release capital during periods of financial stress. The goal is to build up the buffer before risks materialize. The countercyclical capital buffer is specific to each country. For Danish and Faroese exposures, the institution-specific countercyclical capital buffer has been rebuilt to the target of 2.5% and 1.0%, respectively. Of total exposures this adds up to 0.8%.

As a Systemically Important Financial Institution (SIFI), the Group is also required to meet the SIFI buffer requirement, which amounts to 2% of the total risk exposure.

The systemic risk buffer is set to 2% of the Faroese risk-weighted exposures, i.e. 1,5% of total risk-weighted exposures.

As of the end of 2023, the combined capital buffer requirement consists of the capital conservation buffer, the countercyclical buffer, the SIFI buffer, and the systemic risk buffer. The calculated combined capital buffer requirement is shown in table 7 below.

Combined buffer requirement	Table 7	
	2023	2022
<b>Total risk-weighted items (mill. DKK)</b>	<b>6,819</b>	<b>7,195</b>
Capital conservation buffer (%)	2.5%	2.5%
Institution specific countercyclical capital buffer (%)	0.8%	0.1%
Systemic risk buffer (%)	1.5%	1.6%
Other Systemically Important Institution buffer (%)	2.0%	2.0%
<b>Combined buffer requirement (%)</b>	<b>6.8%</b>	<b>6.2%</b>
<b>Combined buffer requirement (mill. DKK)</b>	<b>464</b>	<b>443</b>

### 3.5 Excess capital

The excess capital refers to the amount of capital that the Group has in excess relative to the calculated capital requirements.

At the end of 2023, the total CET 1 capital requirement consists of the CET 1 requirement of 4.5%, the addition to individual solvency requirement of 2.3%, and the combined buffer requirement of 6.8%. The total requirement adds up to 13.6% corresponding to DKK 925 million. The Group has a CET 1 capital of DKK 1,758 million with an excess capital of DKK 833 million or 12.2% as shown in table 8 below. This is an increase of 4.0 percentage points compared to 2022.

Excess capital according to CET 1 capital requirements	Table 8	
	2023	2022
Total risk-weighted items (mill. DKK)	6,819	7,195
CET 1 requirements	4.5%	4.5%
Addition to individual solvency requirement	2.3%	2.5%
Combined buffer requirement	6.8%	6.2%
Total requirements	13.6%	13.1%
<b>Total requirements (mill. DKK)</b>	<b>925</b>	<b>946</b>
CET 1 capital	25.8%	21.4%
<b>CET 1 capital (mill. DKK)</b>	<b>1,758</b>	<b>1,538</b>
Excess capital	12.2%	8.2%
<b>Excess capital (mill. DKK)</b>	<b>833</b>	<b>592</b>

The total capital requirements consist of the total individual solvency requirement of 10.3% and the combined buffer requirement of 6.8% which makes up a total requirement of 17.1% corresponding to DKK 1,164 million. The Group has a total capital of DKK 2,008 million with an excess capital of DKK 844 million or 12.4% as illustrated in table 9. This is an increase of 4.2 percentage points compared to 2022.

<b>Excess capital according to total capital requirements</b>		<b>Table 9</b>
	<b><u>2023</u></b>	<b><u>2022</u></b>
Total risk-weighted items (mill. DKK)	6,819	7,195
Total individual solvency requirement	10.3%	10.5%
Combined buffer requirement	6.8%	6.2%
Total requirements	17.1%	16.6%
<b>Total requirements (mill. DKK)</b>	<b>1,164</b>	<b>1,198</b>
Total capital (mill. DKK)	29.4%	24.8%
<b>Total capital (mill. DKK)</b>	<b>2,008</b>	<b>1,787</b>
Excess capital	12.4%	8.2%
<b>Excess capital (mill. DKK)</b>	<b>844</b>	<b>589</b>

The total MREL capital requirement has been set to 23.3% at the end of 2023 of total risk-weighted items corresponding to DKK 1,589 million. The Group has a total capital including MREL capital of DKK 2,806 million at the end of 2023 with an excess capital of DKK 1,217 million or 17.8% as shown in table 10. This is an increase in excess capital of 10.7 percentage points compared to 2022.

<b>Excess capital according to total MREL capital requirements</b>		<b>Table 10</b>
	<b><u>2023</u></b>	<b><u>2022</u></b>
Total risk-weighted items (mill. DKK)	6,819	7,195
Total MREL requirements	23.3%	22.6%
<b>Total MREL requirements (mill. DKK)</b>	<b>1,589</b>	<b>1,623</b>
Total capital, incl. MREL capital	41.1%	29.7%
<b>Total capital, incl. MREL capital (mill. DKK)</b>	<b>2,806</b>	<b>2,137</b>
Excess capital	17.8%	7.1%
<b>Excess capital (mill. DKK)</b>	<b>1,217</b>	<b>514</b>

### 3.6 Leverage ratio

The leverage ratio is calculated as the core capital relative to the total exposure. The Group has established procedures with the aim of mitigating the risk of excessive leverage and ensuring the identification, management, and monitoring of leverage risk. Additionally, methods have been developed to measure risks related to excessive leverage and to assess significant changes in the leverage ratio.

The minimum requirement to the leverage ratio is 3% according to CRR. Furthermore, the Group has set its own minimum requirement goal to 8%. At the end of December 2023, the leverage ratio is calculated to 13.8%. This is an increase of 1.4 percentage point compared to 2022 and is 5.8 percentage points higher than the Group's own minimum goal, which is shown in table 11.

<b>Leverage ratio</b>		<b>Table 11</b>
	<b><u>2023</u></b>	<b><u>2022</u></b>
Minimum requirements	3.0%	3.0%
<b>Own minimum limit</b>	<b>8.0%</b>	<b>8.0%</b>
Exposures (mill. DKK)	13,857	13,564
Core capital	1,908	1,688
<b>Leverage ratio</b>	<b>13.8%</b>	<b>12.4%</b>

## 4. Credit Risk

Credit risk is the most crucial risk facing the Group. BankNordik has loans and guarantees (exposures) of DKK 11,701m, the vast majority of which has been provided to customers in the Faroe Islands and Greenland. The Group pursues an overall credit policy calling for a balanced distribution of loans and advances, however, with an overweight of exposures towards private customers.

Set out below is a presentation of the Group's credit policy, credit risk classification process, credit exposure and credit management. The Group's procedures for writing off bad and doubtful debts form an integral part of this presentation.

In connection with the acquisition of Sparbank (2010) and Amagerbanken (2011), the Group took over some of the exposures that were individually impaired and some of these exposures are a part of the continued operation, although to a very limited extent as the majority of the Danish exposures were sold off to Spar Nord Bank with effect from February 2021. These impairments are recognised as part of the purchase price for the acquired exposures. In 2023 DKK 1m of the impairments reflected in the table below are individual impairments recognised up to 12 months after the acquisition of the relevant exposure.

### 4.1 Definition

The Group defines credit risk as the risk of losses arising because counterparties fail to meet all or part of their payment obligations to the Group. Credit risk also includes country, settlement, and counterparty credit risks, among other things.

BankNordik manages its overall credit risk by way of its general credit policy. One of the purposes of the credit policy is to ensure a balanced relationship between earnings and risk taking.

### 4.2 Policy

The Board of Directors sets the overall policies for the Group's credit risk exposure. The Group's risk appetite framework is determined in accordance with these policies. The key components of the credit risk policies are described below.

The Group's aim is to build long-term relationships with its customers. For the vast majority of products, credit is granted on the basis of the customer's financial circumstances and specific individual assessments. Ongoing follow-up on developments in the customer's financial situation enables the Group to assess whether the basis for the credit facility has changed. The credit facilities should match the customer's creditworthiness, capital position and assets. Further and in order to increase the mitigation of credit risk, the Group as a general rule requires collateral.

The Group aims to assume risks only within the limits of applicable legislation and other rules, including rules on best practices for financial undertakings.

### 4.3 Credit process

In order to ensure a consistent, coordinated credit granting process of a high quality all credit applications are handled according to a pre-defined procedure that provides a consistent, high credit processing quality:

**Bank branches:** All branch managers can process and approve credit applications within branch manager credit lines. Credit applications exceeding branch manager's credit lines are submitted to the Credit Department along with a credit recommendation.

**Corporate Department:** The central corporate departments in the Faroe Islands and Greenland handle all of the Group's major corporate accounts. Credit applications exceeding the Corporate Department's credit lines are submitted to the Credit Department for approval.

**The Credit Department:** Applications that exceed a branch / Corporate Department credit line are submitted to the Credit Department for approval. The Credit Department also processes staff loan applications exceeding the limit of the branch credit lines. In addition to processing credit applications, the Credit Department coordinates and prepares credit recommendations to the Group's Credit Committee and recommendations submitted to the Board of Directors.



**The Credit Committee:** The Credit Committee reviews all applications beyond the Credit Department's credit line. Credit Committee conducts credit meetings as necessary, typically on a twice-weekly basis. The purpose of the Credit Committee is to:

- Process credit applications exceeding the credit line of the Credit Department;
- Process and provide recommendations for all credit applications to be submitted to the Group's Board of Directors;
- Implement the guidelines for the credit area as approved by the Board of Directors; and
- To supervise the overall credit granting procedure.

**Board of Directors:** The Board of Directors reviews all applications that are beyond the Credit Committee's credit line.

Credit processing must be conducted on the basis of extensive knowledge of the risks inherent to each individual exposure for the purpose of striking a balance between risk and earnings opportunities and in compliance with the overall goals defined by the Board of Directors.

#### 4.4 Credit risk classification

BankNordik's lending exposure is subject to very careful management as part of the day-to-day follow-up conducted by the branches or departments with day-to-day responsibility for the individual portfolios. The follow-up and management process are split into the following categories:

- Day-to-day management is conducted by the relevant account manager;
- Commitments meeting specific criteria are tested individually for impairment four times per year in connection with the Group's quarterly financial statements;
- Reports on exposures due for review by the Credit Department in cooperation with the relevant branch or department;
- The largest exposures are reviewed annually by the Credit Committee;
- The exposures that fall outside the Credit Committee's credit line are reviewed annually by the Board of Directors with analysis and recommendations by the Credit Committee;
- Constant monitoring of the largest exposures is a key priority.

The Group applies an automatic rating model and methodology that provides all customers, private and corporate, with a probability of default for the coming 12 months. This probability of default is mainly used in the Groups' IFRS 9 impairment model but is to some extent also a part of the daily credit monitoring process. The Group still classifies its customers in accordance with the methodology used by the Danish FSA, see table 12. Currently, more than 99% of the overall exposure is individually classified, see table 12 for more details.

#### 4.5 Credit exposure

The following section provides a presentation and review of the Group's loan portfolio. The review deals with the overall loan portfolio, followed by a report on the individual sub-portfolios. The figures include impairments in all stages, which are itemized in part 4.8.

The Group's total loan exposures portfolio listed by category is set out in table 12. As shown in table 15, the Group's credit facilities are largely equally distributed between the private and the corporate / public segments. Funds placed with credit institutions and central banks are money market placements and not committed lines.

In the annual report 2023, figures for loans and guarantees are adjusted in accordance with the applicable accounting terms and are therefore not directly comparable to the exposure listed in this Risk Management Report.

Quality of loan portfolio excl. financial institutions 2023		Table 12		
		> 7.5m	< 7.5m	Total
Portfolio without weakness (3, 2a)	Exposure in DKKm	4,387	2,779	7,167
Portfolio with some weakness (2b)	Exposure in DKKm	1,586	2,731	4,317
Portfolio with significant weakness (2c)	Exposure in DKKm	92	89	181
	Unsecured	4	8	11
Portfolio with OEI	Exposure in DKKm	91	168	260
	Unsecured	43	37	80
	Impairments/provisions	23	32	55
Portfolio without individual classification	Exposure in DKKm	62	19	81
<b>Total</b>	<b>Exposure in DKKm</b>	<b>6,218</b>	<b>5,786</b>	<b>12,004</b>

Quality of loan portfolio excl. financial institutions 2022				
		> 7.5m	< 7.5m	Total
Portfolio without weakness (3, 2a)	Exposure in DKKm	3,732	1,608	5,340
Portfolio with some weakness (2b)	Exposure in DKKm	2,061	3,746	5,807
Portfolio with significant weakness (2c)	Exposure in DKKm	95	118	213
	Unsecured	19	20	40
Portfolio with OEI	Exposure in DKKm	117	172	290
	Unsecured	54	46	100
	Impairments/provisions	39	42	81
Portfolio without individual classification	Exposure in DKKm	32	19	51
<b>Total</b>	<b>Exposure in DKKm</b>	<b>6,038</b>	<b>5,663</b>	<b>11,701</b>

#### 4.5.1 Credit exposure, quality, and concentration

In connection with the quarterly review and the on-going follow-up on the Group's loan portfolio is classified in the following categories:

- Portfolio without weakness (3, 2a5)
- Portfolio with some weakness (2b15, 2b30)
- Portfolio with weakness (2c50)
- Portfolio with impairment/provision (1)
- Portfolio without individual classification

Table 12 shows the Group's portfolio based on the review. The classification is based on the methodology used by the Danish FSA.

In their regular inspections, FSA classifies all larger exposures based on the same methodology as the Group does. If there is any difference in classification, the Group adjusts its classification according to the views of FSA. Thus, the classification of the larger exposures will be in line with FSA's classification, adjusted for developments since their last inspection.

One advantage of using the FSA classification is transparency and that it gives a frame of reference, since all exposures in Danish banks are classified by FSA. As such the FSA classification constitutes a market standard. As shown in table 12, more than 99% of total exposures are individually classified. The unclassified part of the portfolio has been steadily decreasing.

The impairments from the acquired portfolio in Sparbank and Amagerbanken of DKK 1m are not included in the total exposure.

The classification gives some important insights to the credit quality of the portfolio. 96% of all exposures are labelled without weakness or only with some weakness. This is of importance bearing in mind that banks with high-risk portfolios normally fail in their larger loans.

There is a relatively low unsecured exposure in weak exposures (2c50). For exposures above DKK 7.5m, DKK 4m is unsecured exposures and in exposures less than 7.5m, DKK 8m is unsecured.

Large Exposures		Table 13	
(DKKm)	2023	2022	
20 Largest Exposures (%) of CET1	139.7%	161.2%	
20 Largest Exposures	2,456	2,480	
CET1	1,758	1,538	

Credit exposure by geographical area										Table 14
(DKKm)	2023					2022				
	Exposures	in%	Loans / Credits	Guarantees	Unused credits	Exposures	in%	Loans / Credits	Guarantees	Unused credits
Faroe Islands	9,228	77%	7,544	578	1,033	9,093	78%	6,952	1,027	1,114
Denmark	1	0%	1	0	0	23	0%	22	2	0
Greenland	2,776	23%	1,515	410	850	2,585	22%	1,290	508	786
<b>Total</b>	<b>12,004</b>	<b>100%</b>	<b>9,060</b>	<b>988</b>	<b>1,883</b>	<b>11,701</b>	<b>100%</b>	<b>8,264</b>	<b>1,537</b>	<b>1,900</b>

The Group's overall target is for no industry to make up more than 10% of the Group's total exposure, see table 15, except for the industry group "Trade" and "Property Administration", for which the limit is 15%.

In special cases, exposures may be above 10% of the capital base, but only for customers of a high credit quality, and where the Group has accepted collateral. The Group has nice customers with exposures exceeding 10% of the capital base all classified 2a or 3, except three classified 2b15.

As can be seen from table 15 no single industry exceeds 10% of total exposures, except for Property administration, etc. which amounts to 14.2%, which is in line with the Group's credit policy.

Personal loans account for about 41.5% of the Group's total loans and advances. The vast majority of the personal loans in the Faroe Islands involve loans for the purchase of real estate in which the Group holds a first mortgage secured against the property.

Risk exposure concentrations					Table 15
	2023		2022		
	DKKm	In %	DKKm	In %	
Public authorities	1,128	9.4%	794	6.8%	
Corporate sector:					
Agriculture and farming, others	66	0.6%	76	0.6%	
Aquaculture	179	1.5%	192	1.6%	
Fisheries	878	7.3%	887	7.6%	
Manufacturing industries, etc.	270	2.3%	324	2.8%	
Energy and utilities	474	4.0%	542	4.6%	
Building and construction, etc	559	4.7%	806	6.9%	
Trade	513	4.3%	564	4.8%	
Transport, mail and telecommunications	678	5.6%	519	4.4%	
Hotels and restaurants	118	1.0%	159	1.4%	
Information and communication	10	0.1%	10	0.1%	
Property administration, etc.	1,708	14.2%	1,624	13.9%	
Financing and insurance	105	0.9%	102	0.9%	
Other industries	339	2.8%	327	2.8%	
<b>Total corporate sector</b>	<b>5,899</b>	<b>49.1%</b>	<b>6,134</b>	<b>52.4%</b>	
Personal customers	4,977	41.5%	4,773	40.8%	
<b>Total</b>	<b>12,004</b>	<b>100.0%</b>	<b>11,701</b>	<b>100.0%</b>	
Credit institutions and central banks	2,092		2,023		
<b>Total incl. credit institutions and central banks</b>	<b>14,096</b>		<b>13,724</b>		

#### 4.6 Risk mitigation

As provided in the Group's overall credit policy, the Group seeks to minimize actual risk taking. Accordingly, the Group generally requires collateral for any credit facility granted. What kind of collateral the Group may require when granting a loan depends on the account / customer involved and is subject to an individual assessment of each credit application.

The types of collateral most frequently provided are real estate, aircrafts & ships, and motor vehicles in addition to guarantees provided by owners or, in the Faroese market, by floating charge.

The Group regularly assesses the value of collateral provided in terms of risk management. It calculates the value as the price that would be obtained in a forced sale less deductions reflecting selling costs and the period during which the asset will be up for sale.

To allow for the uncertainty associated with calculating the value of collateral received, the Group reduces such value by way of haircuts, see table 16. For real estate, haircuts reflect the expected costs of a forced sale and a margin of safety. This haircut is 20% of the expected market value for housing, 30% for Faroese commercial real estate and 35% for Greenlandic commercial real estate. For unlisted securities, guarantees by third party (exclusive of guarantees from public authorities and banks) and collateral in movables, the haircut is 100%.

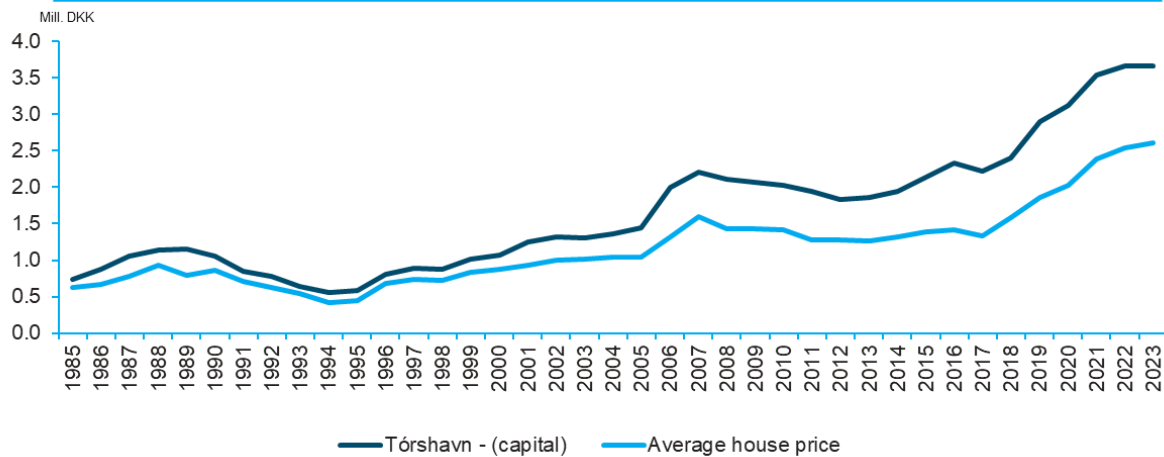
Collateral		Table 16	
	2023	2022	
Cars	2%	2%	
Real Estate	83%	84%	
Aircrafts & Ships	11%	9%	
Other	5%	5%	
<b>Total</b>	<b>100%</b>	<b>100%</b>	

Credit exposure and collateral 2023					Table 17
(DKKm)	Personal customers	Corporate sector	Personal & corporate	Public	Total
Exposure	4,977	5,899	10,876	1,128	12,004
Loans, advances & guarantees	4,675	4,602	9,277	771	10,048
Collateral	4,315	4,247	8,562	7	8,569
<i>*Hereof collateral for stage 3 exposures</i>	98	83	181	0	181
Impairments	52	128	181	1	181
Unsecured (of exposures)	697	1,668	2,365	1,136	3,501
Unsecured (loans, advances and guarantees)	522	939	1,461	780	2,241
Unsecured ratio	14%	28%	22%	101%	29%
Unsecured ratio, loans and advances	11%	20%	16%	101%	22%
<b>Credit exposure and collateral 2022</b>					
(DKKm)	Personal customers	Corporate sector	Personal & corporate	Public	Total
Exposure	4,773	6,134	10,907	794	11,701
Loans, advances & guarantees	4,448	4,876	9,324	478	9,801
Collateral	4,064	4,049	8,113	2	8,115
<i>*Hereof collateral for stage 3 exposures</i>	5	6	11	0	11
Impairments	48	137	184	0	185
Unsecured (of exposures)	822	2,111	2,933	822	3,755
Unsecured (loans, advances and guarantees)	515	1,300	1,815	506	2,320
Unsecured ratio	17%	34%	27%	104%	32%
Unsecured ratio, loans and advances	12%	27%	19%	106%	24%

Table 17 shows the Group's total credit exposure and the collateral for the loans granted divided into private, corporate and public sector. The Group's collateral is mainly in real estate.

House Price Development - Faroe Islands

Figure 3



There are no publicly available statistics illustrating developments in house prices in Greenland. The Group estimates that house prices in the last years have been on the rise.

The Group offers fixed-rate and floating rate mortgage loans to private customers in the Faroese market in cooperation with Danish mortgage provider DLR Kredit. In the Greenlandic markets, mortgage loans are distributed in cooperation with Danish mortgage providers Nykredit and DLR Kredit.

#### 4.7 Monitoring and portfolio management

BankNordik monitors credit facilities centrally through its credit systems. Customers showing a weak financial performance are transferred to a watch list enabling the Group to monitor them more closely and thereby reduce the risk of losses. At least once a year, a review of all exposures above a certain amount is performed.

(DKKm)	2023				2022			
	Exposure	Past due total	Past due > 90 days	Total balance with past due	Exposure	Past due total	Past due > 90 days	Total balance with past due
Portfolio without weakness (3, 2a)	7,167	17	0	1,011	5,340	8	0	814
Portfolio with some weakness (2b, 2b)	4,317	19	1	1,325	5,807	22	0	1,650
Portfolio with significant weakness (2c)	181	1	0	107	213	2	0	58
Portfolio with impairment/provision (1)	260	11	7	166	290	7	1	155
Portfolio without individual classification	81	0	0	1	51	0	0	0
<b>Total</b>	<b>12,004</b>	<b>47</b>	<b>8</b>	<b>2,610</b>	<b>11,701</b>	<b>39</b>	<b>2</b>	<b>2,677</b>
<b>Past due in % of exposure</b>		<b>0.4%</b>	<b>0.1%</b>			<b>0.3%</b>	<b>0.0%</b>	

Unauthorized overdrafts are automatically referred to the customer's adviser, who decides whether or not to accept the overdraft. For good customers, the Group often accepts one or more accounts being overdrawn for a certain period of time. If the overdraft is not accepted, a reminder procedure is initiated. As shown in table 18, DKK 2m is more than 90 days past due.

##### 4.7.1 Credit risk management

The Group monitors which segments should be given extra attention on a continuing basis and reviews at least once a year.

Credit audits are conducted on a continuing basis. In addition, based on monthly credit risk reports, the business units and the Credit Department monitor and review credit quality. The Credit Department prepares a quarterly credit risk report to the Credit Committee and the Board of Directors.

#### 4.8 Impairment/Losses

The Group tests the entire loan portfolio for impairment four times per year. Table 19 shows the Group's total losses by industry sector from 2010 to 2023. As the table shows, the average loss ratio during the overall period was 0.7% of the Group's total loans and guarantees. As can be seen from the data, there are relatively large variations from year to year and from industry to industry.

Sector:	Weighted	2023	2022	2021	2020	2019	2018	2017	2016	2015	2014	2013	2012	2011	2010
Retail	0.3%	-0.1%	0.0%	0.0%	0.1%	0.1%	0.0%	0.6%	1.3%	0.7%	0.6%	0.4%	0.2%	0.3%	0.1%
Agriculture	0.4%	0.0%	3.7%	0.0%	0.0%	0.0%	0.8%	0.0%	1.6%	0.0%	0.1%	0.1%	0.0%	0.0%	0.0%
Aquaculture	0.0%	0.0%	0.0%	0.0%	0.0%	0.0%	0.0%	0.0%	0.0%	0.0%	0.0%	0.0%	0.0%	0.0%	0.0%
Fishing industry	2.7%	0.1%	0.0%	0.0%	0.3%	0.9%	0.5%	1.7%	0.5%	1.1%	3.1%	1.5%	11.9%	14.0%	2.8%
Manufacturing industries etc.	1.2%	0.0%	0.0%	0.0%	0.0%	0.1%	0.1%	12.1%	3.2%	0.0%	0.0%	0.2%	0.2%	0.3%	0.6%
Building and construction etc.	1.3%	0.0%	0.0%	1.7%	1.1%	2.9%	0.0%	3.3%	0.2%	0.4%	0.6%	0.2%	0.9%	0.3%	6.2%
Trade, hotels and restaurants	1.0%	0.0%	0.0%	0.4%	0.1%	0.1%	0.3%	0.5%	0.6%	0.1%	0.6%	1.3%	4.0%	2.7%	3.1%
Transport, mail and telephone	0.3%	0.0%	0.0%	0.0%	0.0%	0.0%	0.0%	1.1%	0.2%	0.0%	0.1%	0.1%	2.6%	0.0%	0.0%
Service	0.5%	0.0%	0.0%	0.0%	0.0%	0.0%	0.0%	0.1%	0.2%	0.0%	0.1%	0.4%	2.0%	3.0%	1.6%
Property adm., purchase and sale and business services	2.0%	0.0%	0.0%	0.0%	0.0%	0.0%	0.1%	9.4%	0.8%	1.8%	7.0%	2.5%	0.4%	0.5%	5.7%
Other services	0.1%	-0.1%	0.0%	0.3%	0.1%	1.3%	0.0%	0.0%	0.0%	0.0%	0.0%	0.0%	0.0%	0.0%	0.0%
Public Authorities	0.0%	0.0%	0.0%	0.0%	0.0%	0.0%	0.0%	0.0%	0.0%	0.0%	0.0%	0.0%	0.0%	0.0%	0.0%
<b>Total</b>	<b>0.7%</b>	<b>0.0%</b>	<b>0.3%</b>	<b>0.2%</b>	<b>0.1%</b>	<b>0.1%</b>	<b>0.2%</b>	<b>1.5%</b>	<b>1.1%</b>	<b>0.6%</b>	<b>1.0%</b>	<b>0.7%</b>	<b>1.1%</b>	<b>0.9%</b>	<b>1.5%</b>

From 1 January 2020, the Group's impairments reflect the expected credit loss impairment model in IFRS 9 and Executive Order on Financial Reports for Credit Institutions and Investment Firms, etc. as valid in the Faroe (PD), the exposure at default (EAD) and the loss given default (LGD). All expected credit loss impairments are allocated to individual exposures. For all exposures with objective indication of being subject to impairment in creditworthiness, stage 3 exposures, the Group determines the expected credit losses individually.

If a loan, advance or amount due is classified to stage 3, the Group determines the individual impairment charge.

The charge equals the difference between the carrying amount and the present value of the estimated future cash flow from the asset, including the realisation value of collateral, in three weighted scenarios – the base case, upside and downside scenario. Loans and advances not classified as stage 3 are classified in stage 1 or stage 2 and the expected credit loss is calculated in accordance with the function described above and then impaired. Table 20 provides a breakdown of individual impairments, stage 3, and statistical based impairments, stage 1 and 2.

DKKm	2023		2022	
	Loans gross	Impairments	Loans gross	Impairments
<b>Individual impairments:</b>				
Faroe Islands	127	22	151	43
Denmark	1	2	22	21
Greenland	112	32	87	17
<b>Total</b>	<b>240</b>	<b>55</b>	<b>259</b>	<b>81</b>
<b>Statistic impairments:</b>				
Faroe Islands	7,417	81	6,786	79
Denmark	0	0	0	0
Greenland	1,403	45	1,195	26
<b>Total</b>	<b>8,820</b>	<b>126</b>	<b>7,981</b>	<b>105</b>

In connection with the acquisition of Sparbank (2010) and Amagerbanken (2011), the Group took over some of the exposures that were individually impaired and some of these exposures are a part of the continued operation. These impairments are recognised as part of the purchase price for the acquired exposures. In 2023 DKK 1m of the impairments reflected in the table below are individual impairments recognised up to 12 months after the acquisition of the relevant exposure.

<b>Distribution of impairments at the Executive Management's discretion</b>					<b>Table 21</b>
<b>2023</b>					
(DKKm)					
<b>Country / Stage</b>	<b>1</b>	<b>2</b>	<b>2w</b>	<b>3</b>	<b>Total</b>
Faroe Islands	51.8	17.8	0.0	0.0	69.7
Greenland	18.1	12.3	0.0	0.0	30.3
Denmark	0.0	0.0	0.0	0.0	0.0
<b>Total</b>	<b>69.9</b>	<b>30.1</b>	<b>0.0</b>	<b>0.0</b>	<b>100.0</b>
<b>2022</b>					
(DKKm)					
<b>Country / Stage</b>	<b>1</b>	<b>2</b>	<b>2w</b>	<b>3</b>	<b>Total</b>
Faroe Islands	30.2	11.0	0.2	0.0	41.3
Greenland	6.0	8.7	0.0	0.0	14.7
Denmark	0.0	0.0	0.0	0.0	0.0
<b>Total</b>	<b>36.2</b>	<b>19.6</b>	<b>0.2</b>	<b>0.0</b>	<b>56.0</b>

#### 4.9 The Supervisory Diamond

The Danish FSA applies a model for measuring whether a bank has a high-risk profile — the Supervisory Diamond. The model identifies five areas considered to be indicators of increased risk if not within certain limits. The Group meets by a wide margin the limits for large exposures, loan growth, exposures towards property, funding ratio, and the liquidity indicator.

<b>The Supervisory Diamond</b>	<b>2023</b>	<b>2022</b>	<b>Table 22 FSA limit</b>
Sum of large exposures	139.7%	161.2%	< 175%
Liquidity indicator	223.7%	229.3%	>100 %
Loan growth	9.9%	6.0%	< 20 %
Property exposure	13.1%	13.8%	< 25 %

## 5. Market Risk

### 5.1 Organisation

The Bank has established an Investment Working Group to monitor the financial markets and continuously update its view on the financial markets. The Investment Working Group meets monthly to discuss the outlook for the financial markets and make an update containing a recommendation on tactical asset allocation to the Investment Group. The Investment Working Group refers to the Investment Group. Participants in the Investment Group are the CEO, the CFO, the CIO, the Risk Manager, the Financial Manager and Treasury. Based on the recommendation, the Investment Group decides whether to retain or revise the Bank's official outlook. The Investment Group's decisions are communicated throughout the organization and form the basis for all advice provided to customers and included in the Bank's official Markets Update.

### 5.2 Definition

The Group defines market risk as the risks taken in relation to price fluctuations in the financial markets. Several types of risk may arise, and the Bank manages and monitors these risks carefully.

#### BankNordik's market risks are

- Interest rate risk: risk of loss caused by an upward change in interest rates
- Exchange rate risk: risk of loss from positions in foreign currency when exchange rates change
- Equity market risk: risk of loss from falling equity values

### 5.3 Policy and responsibility

The Group's market risk management relates to the Group's assets, liabilities, and off-balance-sheet items. The Board of Directors defines the overall policies / limits for the Group's market risk exposures, including the overall risk limits. The limits on market risks are set with consideration of the risk they imply, and how they match the Group's strategic plans. On behalf of the Executive Board, the Group Risk Committee is responsible for allocating the market risk to the Group's major business areas. Historically, lines have mainly been granted to Treasury. Treasury is responsible for monitoring and handling the Bank's market risks and positions. Markets have been granted small market risk lines for its daily operations. The Finance Department reports market risks to the Executive Board on a monthly basis.

Reporting of Market risk	Table 23 Board of Directors
Monthly	Overview of - Interest risk - Exchange risk - Equity market risk - Liquidity risk - Deposits <b>Executive Board</b>
Monthly	Overview of - Interest risk - Exchange risk - Equity market risk - Liquidity risk - Deposits
Daily	Overview of - Funding risk - Deposits - Liquidity risk



#### 5.4 Control and management

The stringent exchange rate risk policies support the Group's investment policy of mainly holding listed Danish government and mortgage bonds. The Finance Department monitors and reports market risk to the Board of Directors and the Executive Board on a monthly basis.

Market Risk Management						Table 24
Level	Board of Directors	Executive Board	CFO	Financial manager	Markets	Treasury
Strategic	Defines the overall market risk					
Tactical	Delegating risk authorities to relevant divisions			Managing the Bank's market risk		Implementing
Operational			Controlling & Reporting	Monitoring	Trading	

#### 5.5 Market risk

Table 25 shows the likely after-tax effects on the Bank's share capital from likely market changes.

Likely after tax effects from changes in markets value						Table 25
	Change	2023	% of Core Capital	2022	% of Core Capital	
Equity risk DKKm (+/-)	10%	23	1.2%	24	1.4%	
Exchange risk DKKm (+/-) EUR	2.25%	0	0.0%	0	0.0%	
Exchange risk DKKm (+/-) Other currencies	10%	0	0.0%	1	0.0%	
Exchange risk, Total		1	0.0%	1	0.0%	
Interest rate risk DKKm (parallel shift)	100 bp	12	0.7%	14	0.8%	

- All equity prices fall by 10%.
- All currencies change by 10% (EUR by 2.25%)
- Foreign exchange risk
- Upwards parallel shift of the yield curve of 100 bp.

The calculations show the potential losses for the Group deriving from market volatility.

#### 5.6 Interest rate risk

The Group's policy is to invest most of its excess liquidity in LCR compliant bonds. As a consequence, BankNordik holds a large portfolio of bonds, and most of the Group's interest rate risk stems from this portfolio.

The Group's interest rate risk is calculated according to the requirements of the Danish FSA. The interest rate risk is defined as the effects of a one percentage point parallel shift of the yield curve. BankNordik offers fixed rate loans to corporate customers. The interest rate risk from these loans is hedged with interest rate swaps on a one-to-one basis. Table 26 shows the Group's overall interest rate risk measured as the expected loss on interest rate positions that would result from a parallel upward shift of the yield curve.

Interest rate risk broken down by currency			Table 26
(DKKm)	2023	2022	
DKK	15	17	
SEK	0	0	
EUR	0	0	
<b>Total</b>	<b>15</b>	<b>17</b>	

### 5.7 Exchange rate risk

BankNordik's base currency is DKK and assets and liabilities in other currencies therefore imply an extra risk as they may vary in value over time relative to DKK. BankNordik's core business as a commercial bank makes it necessary to have access to foreign currencies and to hold positions in the most common currencies. Given the uncertainty of currency fluctuations, BankNordik's policy is to maintain a low currency risk. The Group's exchange rate risk mainly stems from customer loans / deposits in foreign currency. The exchange rate risk on the issued bonds of SEK 300m is effectively hedged using a matching cross currency swap.

<b>Foreign exchange position</b>	<b>Table 27</b>	
(DKKm)		
	<u>2023</u>	<u>2022</u>
Assets in foreign currency	12	13
Liabilities and equity in foreign currency	0	0
Exchange rate indicator 1	12	13
Exchange rate indicator 2	0	0

### 5.8 Equity market risk

BankNordik's stringent risk policy restricts equity positions to listed and liquid shares and shares related to the Danish banking sector. The Group occasionally holds unlisted shares, for example in connection with taking over and reselling collateral from defaulted loans. The Group has acquired holdings in a number of unlisted banking related companies. These are mainly investments in companies providing financial infrastructure and financial services to the Bank. For some of these investments, BankNordik's holding is rebalanced yearly according to the business volume generated by the Bank to the company in question.

<b>Equity risk</b>	<b>Table 28</b>	
(DKKm)		
	<u>2023</u>	<u>2022</u>
Share/unit trust certificates listed on the Copenhagen Stock Exchange	90	123
Other shares at fair value based on the fair-value option	190	175
<b>Total</b>	<b>280</b>	<b>298</b>

## 6. Liquidity Risk

### 6.1 Definition

Liquidity risk is defined as the risk of loss resulting from

- Increased funding costs
- A lack of funding of new activities
- A lack of funding to meet the Group's commitments

The Board of Directors has defined the Bank's liquidity limits for the daily operational level and for budgeting plans. The Danish FSA has designated BankNordik as a systematically important financial institution (SIFI). With a liquidity coverage ratio (LCR) of 228.2% and a NSFR ratio of 151.9% on 31 December 2023 BankNordik's liquidity position remains robust.

LCR and NSFR ratio		Table 29	
LCR ratio	2023	NSFR ratio	2023
Liquid assets (mill. DK)	2,990	Available stable funding (mill. DKK)	11,109
Outflows (mill. DKK)	1,477	Required stable funding (mill. DKK)	7,316
Inflows (mill. DKK)	167		
<b>LCR ratio</b>	<b>228.2%</b>	<b>NSFR ratio</b>	<b>151.9%</b>

### 6.2 Control and management

Liquidity risk is a fundamental part of the Group's business strategy. The Group's liquidity is monitored and managed by Treasury on a daily basis in accordance with the limits set by the Board of Directors and reported to the Executive Board by the Finance Department. A liquidity report with stress tests is submitted to the Executive Board and the Group Risk Committee on a monthly basis. Treasury has the operational responsibility for investment of the liquidity, while Finance Department is responsible for reporting and monitoring liquidity. The Group has implemented contingency plans to ensure that it is ready to respond to unfavourable liquidity conditions.

#### 6.2.1 Operational liquidity risk

The objective of the Group's operational liquidity risk management is to ensure that the Group has sufficient liquidity at all times to handle customer transactions and changes in liquidity. BankNordik complies with LCR requirements and therefore closely monitors the bond portfolio with regards to holding sufficient LCR compliant bonds.

Liquidity Management					Table 30
	Board of Directors	Executive Board	CFO	Financial manager	Treasury
<b>Objective</b>	Defines the objectives for liquidity policies				
<b>Tactical</b>	Sufficient and well diversified funding			Planning	Providing background materials
<b>Operational</b>			Controlling & Reporting	Monitoring	Establish contact

#### 6.2.2 Liquidity stress testing

BankNordik has incorporated a liquidity stress testing model based on LCR. This model is used at least monthly to forecast developments in the Bank's liquidity on a 1-12-month horizon. The test is based on the business-as-usual situation and in a stressed version with outflows from undrawn committed facilities and other stress measures. If the target is not met, the Executive Board must implement a contingency plan.

#### 6.2.3 Twelve-month liquidity

The Bank's 12-month funding requirements are based on projections for 2024 and takes the market outlook into account.

#### 6.2.4 Structural liquidity risk

Deposits are generally considered a secure source of funding. Deposits are generally short term, but their historical stability enables BankNordik to grant customer loans with much longer terms e.g. 25 years to fund residential housing. It is crucial for any bank to handle such maturity mismatch and associated risk, and therefore it is essential

to have a reputation as a safe bank for deposits. Table 31 shows assets and liabilities by a maturity structure. In order to minimize liquidity risk, BankNordik's policy is to have strong liquidity from different funding sources.

### 6.2.5 Funding sources

The Group monitors its funding mix to make sure that there is a satisfactory diversification between deposits, equity, hybrid capital, and loans from the financial markets.

Remaining maturity						Table 31
(DKK 1,000)						
2023	0-1 months	1-3 months	3-12 months	More than 1 year	Without fixed maturity	Total
Cash in hand and demand deposits with central banks	1,795,718					1,795,718
Due from Credit institution	260,050					260,050
Loans and advances	317,288	449,953	1,154,915	10,099,874		12,022,031
Bonds			265,100	978,404		1,243,503
Shares					190,388	190,388
Derivatives	44,697					44,697
Other Assets	45,371	15,298	27,413	9,362		97,444
<b>Total assets</b>	<b>2,463,124</b>	<b>465,251</b>	<b>1,447,428</b>	<b>11,087,640</b>	<b>190,388</b>	<b>15,653,832</b>
<b>2023</b>						
Due to credit institutions and central banks	58,391		129,829	569,453		757,673
Deposits	6,820,051	559,718	842,103	510,682		8,732,555
Issued bonds				1,227,429		1,227,429
Other liabilities	36,839	48,698	88,263			173,801
Lease liabilities	277	554	2,494	64,239		67,565
Provisions for liabilities				1,869		1,869
Subordinated debt				121,880		121,880
Equity					2,035,891	2,035,891
<b>Total</b>	<b>6,915,559</b>	<b>608,971</b>	<b>1,062,689</b>	<b>2,495,552</b>	<b>2,035,891</b>	<b>13,118,663</b>
<b>Off-balance sheet items</b>						
Financial Guarantees	177,202					177,202
Other commitments	842,967					842,967
<b>Total</b>	<b>1,020,169</b>					<b>1,020,169</b>
<b>Remaining maturity</b>						
(DKK 1,000)						
2022	0-1 months	1-3 months	3-12 months	More than 1 year	Without fixed maturity	Total
Cash in hand and demand deposits with central banks	1,442,643					1,442,643
Due from Credit institution	389,894					389,894
Loans and advances	1,032,384	218,166	862,394	7,809,024		9,921,969
Bonds	144,000		93,784	1,240,688		1,478,471
Shares					228,572	228,572
Derivatives	72,458					72,458
Other Assets	78,645	70,182	1,728		148	150,702
<b>Total assets</b>	<b>3,160,025</b>	<b>288,348</b>	<b>957,906</b>	<b>9,049,712</b>	<b>228,721</b>	<b>13,684,711</b>
<b>2022</b>						
Due to credit institutions and central banks	58,665		139,220	429,387	299,507	926,779
Deposits	7,397,017	232,896	331,419	374,898		8,336,230
Issued bonds		200,000		421,952		621,952
Other liabilities	14,406	43,191	2,504	69,230	47,914	177,244
Lease liabilities	244	488	2,198	68,524		71,455
Provisions for liabilities				7,052		7,052
Subordinated debt				124,755		124,755
Equity					2,001,741	2,001,741
<b>Total</b>	<b>7,470,332</b>	<b>476,575</b>	<b>475,342</b>	<b>1,495,798</b>	<b>2,349,162</b>	<b>12,267,208</b>
<b>Off-balance sheet items</b>						
Financial Guarantees	265,042					265,042
Other commitments	1,358,477					1,358,477
<b>Total</b>	<b>1,623,519</b>					<b>1,623,519</b>

**6.3 Collateral provided by the Group**

As customarily used by financial market participants BankNordik has entered into standard CSA agreements with other banks. These agreements commit both parties to provide and daily adjust collateral for negative market values. The bank with negative value exposure receives collateral. Thereby reducing counterparty risk to daily market fluctuations of derivatives and pledged amount. As a consequence of these agreements, BankNordik at yearend 2023 had pledged bonds and cash deposits valued at DKK 5.3m under these agreements. BankNordik also provides collateral to the Danish central bank to give the Bank access to the intraday draft facility with the central bank as part of the Danish clearing services for securities. At yearend 2023, this collateral amounted to DKK 42m.

## 7. Operational Risk

The capital adequacy regulation stipulates that banks must disclose all operational risks.

### 7.1 Definition

Operational risk is defined as follows:

“Risk of loss resulting from inadequate or faulty internal procedures, human errors and system errors, or because of external events, including legal risks.”

Operational risk is thus often associated with specific and non-recurring events, such as clerical or record-keeping errors, defects or breakdowns of the technical infrastructure, fraud by employees or third-parties, failure to comply with regulatory requirements, fire and storm damage, litigation or codes of conduct or adverse effects of external events that may affect the operations and reputation of the Bank.

### 7.2 Policy

The Bank seeks to minimise its operational risks throughout the organisation by means of an extensive system of policies and control arrangements, which are designed to optimise procedures.

### 7.3 Measurement and control

At the organisational level, banking activities are kept separate from the controlling functions. Independent auditors perform the internal auditing in order to ensure that principles and procedures are complied with at all times.

Although the Bank has implemented risk controls and taken loss-mitigating actions, and substantial resources have been devoted to developing efficient procedures and training staff, it is not possible to implement procedures that are fully effective in controlling all operational risks. The Bank has therefore taken out insurance in respect of property, office equipment, vehicles, and employee compensation as well as general liability and directors' and officers' liability. In addition, the Bank has taken out insurance against theft, robbery, amounts lost in cash transports between branches or in the post up to a reasonable figure. The Bank believes that the type and relative amounts of insurance that it holds are in accordance with customary practice in its business area.

Assessing the Bank's operational risks in the IT field is considered an important area. The Bank's IT department and management regularly review IT security, including contingency plans for IT breakdowns etc., that are designed to ensure that operations can continue at a satisfactory level in case of extraordinary events. All IT systems running at BankNordik and from the bank's service providers must adhere to documented running schedules and guidelines. IT operations must be safe and stable, a requirement complied with through the greatest possible degree of automation and capacity adjustments. IT services run by service providers must be based on written agreements.

The Bank has not been involved in any governmental, legal or arbitration proceedings (nor is the Bank aware of any such proceedings pending or being threatened) during a period covering at least the preceding 12 months, which may have, or have had in the recent past a material adverse impact on the Bank's financial position or profitability.

Pursuant to the Executive Order for the Faroe Islands on the governance and management of banks, etc. (Bekendtgørelse for Færøerne om ledelse og styring af pengeinstitutter m.fl.) and the Danish FSA's guidelines, the Bank is required to perform a qualitative assessment of its control environment. Control environment is a collective term for the resources the bank applies to minimise the risks involved in carrying on the financial business. Such resources would include an assessment of the scope of internal business procedures, the degree of functional segregation, and whether the necessary management and control tools are in place in all relevant business areas.

### 7.4 Long-term goals in operational risk management

In addition to monitoring the level of risk for assessing the capital requirement for operational risk, the Bank's monitoring system is designed to gather new statistics on operational risk. The long-term objective is for the monitoring system monitoring the level of operational risk in the Bank's branches on a monthly basis to have a preventive effect and to help to minimise the Bank's operational risk.

## 8. Insurance Risk

Insurance risk in the Group consists of non-life and life risks. The Group has a non-life insurance company, Trygd and a life insurance company, NordikLív.

Risk exposure for an insurance company can be defined as a contingency event, chain of events or bad management which can by itself, or by accumulation, seriously affect the annual results of the insurer and in extreme cases make it unable to meet its liabilities. Risks for an insurance operation are typically categorized as insurance risk and market risk. Among other risks are currency exchange risk, liquidity risk, counterparty and concentration risk and operational risk.

Careful and prudent risk management forms an integral part of any insurance operations. The nature of insurance is to deal with unknown future incidents resulting in a payment obligation. An important part of managing insurance risk is reinsurance. The Group must protect itself against dramatic fluctuations in technical results by entering into agreements on reinsurance so that the risk of the Group having to pay claims from its own funds is reasonable in relation to the risks assumed, their composition and the company's equity. This is done with statistical spread of risks and accumulation of funds, quantified by statistical methods, to meet these obligations.

The Group has defined internal procedures to minimise the possible loss regarding insurance liabilities. The insurance companies evaluate their insurance risk on a regular basis for the purpose of optimising the risk profile. Risk management also involves holding a well-diversified insurance portfolio. The insurance portfolio of Trygd is well diversified in personal and commercial lines (see table 32).

Distribution of Trygd's portfolio	Table 32	
	2023	2022
Commercial lines	35.7%	37.3%
Personal lines	64.3%	62.7%

The insurance companies cover the insurance liabilities through a portfolio of securities and investment assets exposed to market risk. The total interest rate risk from changes in markets value is illustrated in table 33 below.

Likely effects from changes in markets value	Table 33		
	Change	2023	2022
(DKKm)			
Equity risk (+/-)	10%		
Exchange risk (+/-) in euro	2.25%		
Exchange risk (+/-) other currency	10%		
Interest rate risk (parallel shift) - Trygd	100 bp	3.9	1.9
<b>Interest rate risk (parallel shift) Total</b>	<b>100 bp</b>	<b>5.4</b>	<b>2.6</b>

### 8.1 Capital requirements

The effects on BankNordik's solvency, due to the ownership of the insurance company's Trygd and NordikLív, are considered low. According to CRR the risk weighted assets has increased DKK 316m. The negative effect on the solvency thus is 1.3% points.

### 8.2 Trygd non-life insurance

The Board of Directors and Executive Management of Trygd must ensure that the company has an adequate capital base and internal procedures for risk measurement and risk management to assess the necessary capital base applying a spread appropriate to cover Trygd's risks.

In order to meet these requirements Trygd's policies and procedures are regularly updated. Risk management at Trygd is based on a number of policies, business procedures and risk assessments which are reviewed and must be approved by the Board of Directors annually.

The size of provisions for claims is based on individual assessments of the final costs of individual claims, supplemented with statistical analyses.

The company's acceptance policy is based on a full customer relationship, which is expected to contribute to the overall profitability of the Group. In relation to acceptance of corporate insurance products, the Board of Directors has approved a separate acceptance policy, which is implemented in the handling process of the corporate department.

Reinsurance is an important aspect of managing insurance risk. The Group must protect itself against dramatic fluctuations in technical results by entering into agreements on reinsurance to make the risk of the Group having to pay claims from its own funds reasonable in relation to the size of the risk assumed, the risk composition and Trygd's equity.

Trygd has organized a reinsurance program which ensures that e.g. large natural disasters and significant individual claims do not compromise Trygd's ability to meet its obligations. For large natural disasters, the total cost to Trygd in 2023 would amount to a maximum of DKK 6m plus 10% of the amount exceeding DKK 6m up to 10m. The 10% were added to Trygd's share for layer 1 of the Property reinsurance programme 2023 as it was not possible to cover 100% of that layer.

The reinsurance program is reviewed once a year and approved by the Board of Directors.

Trygd uses reputable reinsurance companies with strong ratings (A-class ratings at least on S&P or equivalent) and financial positions.

Trygd's Claims Department is responsible for handling all claims and only claims employees deal with claims matters or advise claimants in specific claim cases. Technical provisions to cover future payments for claims arising are calculated using appropriate and generally recognised methods. Insurance provisions are made to cover the future risk based on experience from previous and similar claims. These are updated on a yearly basis taking realized costs of claims into account and the Claims Department is continuously updating and monitoring the claim provisions. These methods and analyses are subject to the natural uncertainty inherent in estimating future payments, both in terms of size and date of payment.

Trygd's investment policy is restrictive and Trygd holds mainly government bonds and Danish mortgaged backed bonds limiting the primary financial risk to interest rate risk. However, during 2022 there was a change in the risk appetite, and therefore a small portion of the funds can be placed in shares through equity funds. This line was continued in 2023. There is no exchange rate risk, as all investments are based in DKK. Trygd has invested in investment securities and cash and cash equivalents in the effort to balance the exposure to market and currency risk (see table 34).

<b>Financial assets linked to insurance risk in Trygd</b>	<b>Table 34</b>	
(DKK 1,000)	<b>2023</b>	<b>2022</b>
Listed securities on stock exchange	227,865	175,578
Accounts receivable (total technical provisions)	3,275	2,634
Cash and cash equivalents	1,695	6,304
<b>Total</b>	<b>232,836</b>	<b>184,516</b>



Run-off gains/losses in Trygd					Table 35
(DKKkm)					
Sector	2023	2022	2021	2020	2019
Industry	-1.15	3.31	-0.01	0.67	1.04
Private	0.19	-0.42	-0.06	0.34	-0.14
Accidents	3.17	-3.55	-10.62	-5.55	-0.17
Automobile	-4.49	-2.79	1.45	3.31	3.56
<b>Total</b>	<b>-2.27</b>	<b>-3.46</b>	<b>-9.24</b>	<b>-1.23</b>	<b>4.28</b>

Contractual maturity for the insurance segment							Table 36
(DKK 1,000)							
2023	On demand	0-12 months	1-5 years	Over 5 years	No stated maturity	Total	
<b>Assets</b>							
Securities	227,865					227,865	
Reinsurance assets		3,275				3,275	
Accounts receivables		3,980				3,980	
Restricted cash							
Cash and cash equivalents	1,695					1,695	
<b>Total financial assets</b>	<b>229,560</b>	<b>7,255</b>				<b>236,816</b>	
<b>Liabilities</b>							
Technical provision		138,635				138,635	
Account payable		15,837				15,837	
<b>Total financial liabilities</b>		<b>154,472</b>				<b>154,472</b>	
<b>Assets - liabilities</b>	<b>229,560</b>	<b>-147,216</b>				<b>82,344</b>	
<b>Contractual maturity for the insurance segment</b>							
(DKK 1,000)							
2022	On demand	0-12 months	1-5 years	Over 5 years	No stated maturity	Total	
<b>Assets</b>							
Securities	175,578					175,578	
Reinsurance assets		2,634				2,634	
Accounts receivables		4,267				4,267	
Restricted cash							
Cash and cash equivalents	6,304					6,304	
<b>Total financial assets</b>	<b>181,882</b>	<b>6,901</b>				<b>188,783</b>	
<b>Liabilities</b>							
Technical provision		115,064				115,064	
Account payable		10,533				10,533	
<b>Total financial liabilities</b>		<b>125,597</b>				<b>125,597</b>	
<b>Assets - liabilities</b>	<b>181,882</b>	<b>-118,696</b>				<b>63,186</b>	

### 8.3 NordikLív — Life insurance

NordikLív issues regular life, disability, and critical illness insurance covers in the Faroese market.

The primary risks of NordikLív are financial risks, insurance risks, operational risks, and commercial risks.

NordikLív's investment policy is restrictive and at present NordikLív holds mainly government bonds and Danish mortgaged backed bonds limiting the primary financial risk to interest rate risk. During 2022 there was a change in the risk appetite, and therefore a small portion of the funds can be placed in shares through equity funds. This line was continued in 2023. There is no exchange rate risk, as all investments are based in DKK.

In respect of insurance risks these are, due to the company's limited product portfolio, mainly related to death, disability, costs, and the occurrence of a catastrophe. To mitigate these risks NordikLív's underwriting policy is aimed at securing that only risks that can be characterized as normal for the relevant area of insurance are accepted.

Further, together with the sister company Trygd, NordikLív is reinsured against larger claims, e.g. occurrence of a catastrophe in a Group reinsurance life policy. The combined deductible is DKK 3m with regards to reinsurance.

Operational risks are the risks of suffering an economic loss due insufficient or the complete lack of internal procedures, human or system-based errors or due to external events, including a change in legislation.

Commercial risks are related to the uncertainty of the development of the Faroese life insurance market, change in customer behaviour and demands, a shift in technology and reputational risk.

In order to mitigate operational and commercial risks NordikLív has entered into cooperation agreements with Forenede Gruppeliv, Trygd and BankNordik providing the company with expert resources within production, administration, internal audit, risk management and compliance.